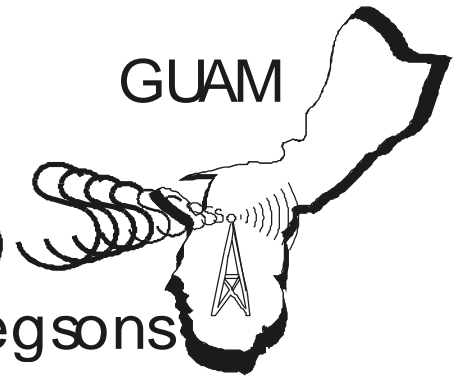


SIGNALS



A newsletter from the Gregsons

In this Issue:

Resettling on Guam



The Path a Program Takes



A Testimony From Myanmar



Warm Guam Greetings!

It was great to be able to celebrate the holidays with our families. After a very encouraging stop in Hawaii visiting supporters we arrived back on Guam on January 11th. While in Hawaii we even had the chance to celebrate our 10th wedding anniversary!

Two days prior to our departure from Massachusetts, Denise underwent a skin procedure in Boston which seemed to have a positive effect. A second treatment has since been performed on Guam and we are hopeful that it will result in further improvement.

We have updated our personal webpage to include some photos from our furlough. You can visit the "furlough pictures" link at: <http://www.thegregsons.org> .

Back into the Swing of Things

Doug initially invested a lot of time setting things up around the home for a new term. One item of praise is that he was able to find the good quality used vehicle that he was hoping for. This is quite a challenge here on Guam! Special thanks to those who contributed towards this expense.



At KTWR **Doug** is busy catching up on the changes that have happened while he was gone. He is also researching to upgrade the internet connection. **Doug** is grateful to **Matt** who covered the IT work while he was on furlough. **Matt** will be leaving for the States in March, preparing for his upcoming marriage and raising the remainder of his support before returning to Guam. When short-term volunteer **Marty Montour** also leaves in March, six men will be left to man the station.

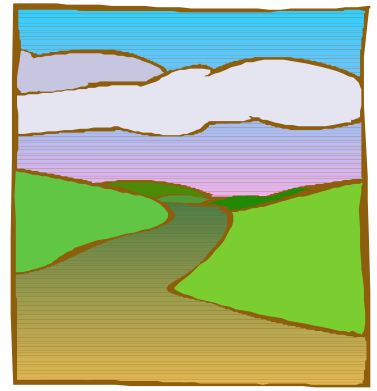
Denise had plenty of resettling to accomplish around the house as well. She wasted no time in getting the home school schedule re-established.

Sarah is now able to boast eight years of age and **Joy** six. They both have been spending lots of time outside on their bikes. They enjoy visiting the bookmobile that comes to our neighborhood twice per month. The various get-togethers with other homeschoolers are lots of fun, too!

The Path a Program Takes

We thought we would use this letter to track the path of our TWR programs from inception to listener. We feel that this is something that we don't communicate enough but find it helps others to better understand our role in the radio broadcasts.

Programs are produced either by someone in the target country or by someone who has a burden for the country (pastors, organizations etc). Programs are sent to the service center (Singapore) and processed for the various distribution modes (Internet, radio, cd etc). For the Guam shortwave broadcasts programs are sent by Internet for playout. From KTWR-Guam, broadcasting blankets Asia from five transmitters. We feel privileged to be able to serve national Christians from various countries helping them to reach their own people.



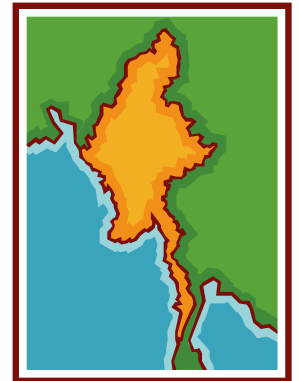
When the listener hears the broadcast he/she may respond in many ways. Some choose to send a letter, others visit the local partner office in their country, make a phone call or send an email. Followup of these contacts could be anything from a simple letter response, sending materials (Bible, radios, study materials etc.) or a personal visit.

As you may have noticed, there are varied jobs and tasks along this program path involving many people and a lot of equipment and technology. We would be remiss if we failed to remind you of the importance of your prayers in this process. It is God who touches and changes the hearts of those who hear the Word. We hope that this description of the program path serves to help you to fine tune your prayers.

"So is my word that goes out from my mouth: it will not return to me empty, but will accomplish what I desire and achieve the purpose for which I sent it."
Isaiah 55: 11

People Touched Along the Path

"I am so thankful for receiving 6 radios to distribute to my disciples who are serving in our church outreach mission fields, and to my friends of other faith who are interested in God and to study His Word. Those who received radios were also very glad for having the opportunity to come to know TWR-Myanmar as well as its Burmese broadcasts which are enabled to enrich their biblical knowledge and spiritual growth needed for their personal growth and ministry. All listeners benefit spiritual strength and knowledge because the contents and messages of TWR- Burmese programs centered on Christ and not focusing on denomination. Besides, these contents and messages are knowledge which we ought to know. May God bless TWR-Myanmar!" ~Rev. "N", Myanmar



Until next time,
Doug, Denise, Sarah and Joy



Guam address;
219 Aga Drive
Santa Rita Guam 96915

Headquarters Address;
Trans World Radio
PO Box 8700
Cary NC 27512-8700
<http://www.twr.org>



Internet:
E-Mail Address: dgregson@mail.com
www page: <http://www.thegregsons.org>